



Feel the Difference



**“I want to deal with people who are dedicated to providing me with total solution”**



Dr. Frank



Piston rings imported from USA  
(Vacuum Pumps only)



## Oilfree Air Compressors & Vacuum Pumps

## Reciprocating Oil Free Air Compressor

### Now you can say good-bye to...

- Foundation
- Site Engineering
- De-Scaling Nightmares
- Maintenance Headaches

### Light weight piston & teflon rings

Special design light weight piston result in lesser inertia forces resulting in increased power savings and the ceramic filled teflon piston rings are higher wear resistant and hence have longer life.

### One piece bearing suited for near life time operation

Shrunk fit bearings ensure proper alignment & clearance thereby

reducing wear and tear. They have very high load bearing capacity. Ideally suited for high pressure piston compressors.

### Overhung crank shaft for easy maintenance

Twin sleeve bearing on the crankshaft at the flywheel side to take the weight of the belt wheel. It is very easy to repair at customer site.

### Advanced Concentric disc valve technology

Manufactured on computerised SPMs, the perfect concentricity and flatness provides close tolerances and ensures an aerodynamic flow for low resistance. All of which means higher reliability, least valve losses & power savings.

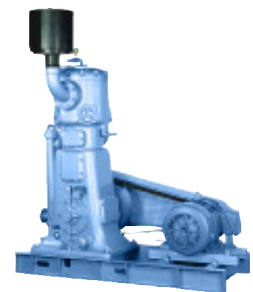


MODEL	Piston Displacement		Free Air Delivery		Motor Power		Compressor RPM	Tank Capacity LITRES
	LPM	cfm	LPM	cfm	HP	Kw		
<b>Direct Driven</b> (Maximum Pressure - 7 kg/cm <sup>2</sup> 102 PSI, Single Stage, 230V / 1 Ph / 50 Hz)								
OF - 7.5D	80	2.82	45	1.58	0.75	0.54	1440	30
OF - 10D	120	4.23	68	2.40	1.00	0.75	1440	30
OF - 15D	205	7.23	101.9	3.6	1.50	1.10	1440	50
OF - 30DT	410	14.4	203.8	7.2	3.00	2.20	1440	110
<b>Belt Driven</b> (Maximum Pressure - 8 kg/cm <sup>2</sup> 116 PSI, Single Stage, 415V / 3 Ph / 50 Hz)								
OF - 30S	300	10.5	204	7.2	3	2.20	440	200
OF - 50S	493	17.4	410	14.5	5	3.70	750	220/500
OF - 75S	759	26.8	606	23.0	7.5	5.50	500	500
OF - 100S	1022	36.10	816	29.0	10.0	7.50	660	500
<b>Belt Driven</b> (Maximum Pressure - 10 kg/cm <sup>2</sup> 145 PSI, Two Stage, 415V / 3 Ph / 50 Hz)								
OF - 150B	1790	63.2	1377	48.6	15	11.6	600	500V
OF - 200B	2235	78.9	1720	60.7	20	14.8	725	500V

## Water Cooled Vertical Oilfree Compressor

They have been designed to grant the best performance, trouble free operation, long life and of course the oilfree dry and hygienic compressed air is required by the hospital or the pharmaceutical. Our compressors have been made to meet these expectation through a constant attention.

MODEL	Power HP	Comp. rpm	Piston Displacement	Free Air Delivery cfm	Maximum Working Pressure	
			cfm		kg/cm <sup>2</sup> g	psig
CT7x5V	30	750	164	110	8.8	125
CT8x5V	40	750	215	143	7.00	100
CT8x7V	50	650	260	180	9.50	135



## Scroll Oilfree Air Compressors

The air is sucked in from the suction mouth at the outside of the fixed scroll. The air enclosed in the compressed space is compressed towards the center when the compression chamber is becoming smaller due to the rotation movement. The compressed space becomes smallest in the center, and the air compressed to the highest limit is squeezed out from the central exhaust port.



Model	Scroll Block	Motor HP	Flow cfm	Pressure Kg/cm <sup>2</sup>	Noise db	Tank Capacity Litres	Weight kgs
OS 3/220	1	3	8.5	8	64	220	155
OS 5/270	1	5	15	8	67	270	240
OS 7.5/270	1	7.5	22.5	8	69	270	245
OS 10/270	2	10	30	8	67	270	265
OS 15/270	2	15	45	8	68	270	275
OS 20/Base	3	20	68	8	69	Base	515
OS 30/Base	4	30	90	8	70	Base	580

## Reciprocating Piston Vacuum Pumps

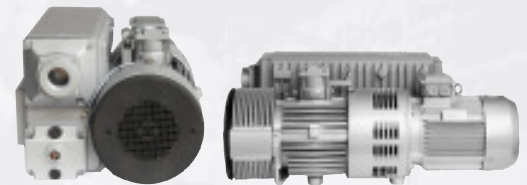


Piston rings imported from USA

MODEL	Piston Displacement		Vacuum (Hg)		Motor Power		Compressor	Tank Capacity LITRES
	LPM	cfm	Inch	mm	HP	Kw	RPM	
<b>Belt Driven</b> (Single Stage 230V 1 Ph / 415V / 3 Ph / 50 Hz)								
Vacuum - 10V	120	4.2	29	736	1	0.74	850	110
Vacuum - 285V	492	17.4	29	736	2	1.48	850	200
Vacuum - 294V	878	31.0	29	736	3	2.20	850	220/500
Vacuum - 305V	1473	52.0	29	736	5	3.70	850	270/500
Vacuum - 57V	2493	88.0	29	736	7.5	5.50	850	500
Vacuum - 65V	3740	132.0	29	736	10	7.40	850	1000V

## Rotary Vane Vacuum Pumps

Rotary vane vacuum pumps are designed for silent operations & continuous operation. The built-in exhaust filter ensures an oil-mist free exhaust gas over the entire range of operating pressures from atmospheric pressure to ultimate pressure.



Model	Piston Displacement		vacuum (Hg)		Motor Power		Vaccum Pump (rpm)	Nosie dB (A)	Tank Cap
	LPM	cfm	Inch	mm	HP	(Kw)			
SV-063	1050	37	0.2	5.1	3	2.2	1400	68	270 / 500
SV-160	2667	94	0.2	5.1	5.5	4.0	1440	74	270 / 500
SV-200	3333	118	0.2	5.1	7.5	5.5	1440	74	500
SV-300	5000	176	0.03	0.82	10	7.5	1440	70	—
SV-630	10667	377	0.03	0.82	20	15	970	75	—

## Desiccant Air Dryers

The latest technology in Desiccant Air Dryers offers total cleaning and drying solution for lubricated as well as non-lubricated Compressors. Coalescing filters (boro silicate micro glass fibres) assure maximum removal of oil and liquid moisture upto 0.3 microns. Compressed air at -40°C dew point.

**Salient features :** • Microprocessor Controller • Pre-filter rating 0.3 microns (coalescer) • Shuttle valve for Low Pressure drop • All Aluminium resist oxidation & scale formation • Dewpoint better than -40°C • Design Patented



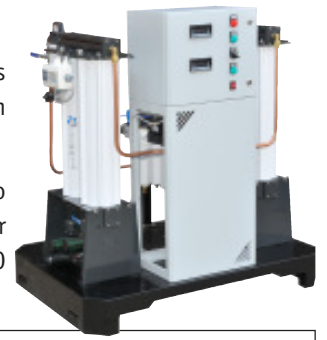
Model	Flow cfm	End Connection BSP	Dimensions (mm)			Weight KGS	Recommended Accessories	
			H	W	D		Pre filter (1)	Post filter (2)
Dryspell 10	10	1/2"	600	280	200	11	G 24 P	G 24 Y
Dryspell Plus 10	10	1/2"	1038	330	150	21	G 24 P	G 24 Y
Dryspell Plus 20	20	1/2"	963	371	213	29	G 100 P	G 100 Y
Dryspell Plus 30	30	1/2"	1227	371	213	39	G 100 P	G 100 Y
Dryspell Plus 45	45	1/2"	999	497	313	49	G 100 P	G 100 Y
Dryspell Plus 60 A	60	3/4"	1192	523	313	61	G 100 P	G 100 Y
Dryspell Plus 100	100	1"	1603	439	372	106	G 250 P	G 250 Y



## Medical Air Dryer

Dryspell medical dryers delivers a dewpoint of +2°C as mandated by **NFPA 99**. The dryspell medical dryers operates with the principle of Pressure Swing Adsorption, hence removes more moisture than a refrigeration air dryers, and it delivers moisture free dry air consistently irrespective of flow variation.

Based on medical application criticality, the package comes with one working and one stand by dryers. So there is no need to stop the air dryers for maintenance. Purge saving system saves purge air upto 60% for a typical hospital load of 30% to 40%. Dewpoint and CO monitor enables to monitor dewpoint and CO levels as mandated by **NFPA 99**.



Model	Flow cfm	End Connection BSP	Dimensions (mm)		
			H	W	D
TBAS 10	10	1/2"	600	840	600
TBAS 20	20	1/2"	600	1050	780
TBAS 30	30	1/2"	810	1050	780
TBAS 45	45	1/2"	1055	1050	780
TBAS 60 A	60	1"	1250	1250	855
TBAS 100	100	1"	1540	1245	900
TBAS 200	200	1 1/2"	1540	1350	1300



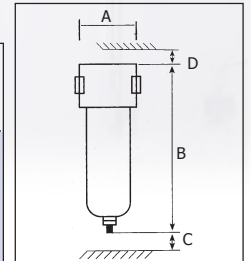
## Submicron Filters

Contaminants in unfiltered compressed air eventually have disastrous effect on the end products. To increase the performance of pneumatic tools these contaminants need to be filtered periodically.

Oil and water are present both in liquid and vapour state. Coalescing filters with filter media (boro silicate micro glass fibres) remove liquid contaminants.

**Salient features :** • Coalescing filters • Aluminium Pressure Die Cast Housing • Coloured Element • Differential Pressure Indicator / Gauge • Internal Drain / External Drain

Model	Element Grade	Drain Type	Pipe Size BSP/ NB	Flow Rate (scfm)	Max Working Pressure kg/cm <sup>2</sup>	Housing Dimensions (mm)				Weight (kgs)
						A	B	C	D	
T 100	P/X/Y/A	IA / EA	1/2"	60	16	96	237	150	-	1.5
T 250	P/X/Y/A	IA / EA	1"	150	16	117	465	300	-	3.5
T 600	P/X/Y/A	IA / EA	1 1/2"	350	16	117	530	425	-	4



### Specification

### Element Grade

Description	P	X	Y	A
Filter Element	Borosilicate	Borosilicate	Borosilicate	Activated Carbon
Particle Removal	5 (Micron)	1 (Micron)	0.01 (Micron)	0.01 (Micron)
Max. Oil carryover	5 (mg/m <sup>3</sup> )	0.5 (mg/m <sup>3</sup> )	0.01 (mg/m <sup>3</sup> )	0.003 (mg/m <sup>3</sup> )

## Bacteria Filters

Our bacteria elements are fully imported from Taiwan and the life of the element is very high. Each membrane filter element has been individually for integrity by using an air diffusion test.

Model	Pipe Size BSP	Flow rate (cfm)	Working Pressure (Kg/cm <sup>2</sup> )	Filter Rating
BAC-50	1"	50	16	0.2 microns
BAC-100	1"	100	16	0.2 microns



## Frank Technologies Pvt. Ltd.,

SF No.570/4A-4B, Kurudampalayam, K. Vadamadurai Post,  
Coimbatore - 641 017. India. Telefon : +91-422-2646490, 4050900  
Email : [sales@frankcompressors.com](mailto:sales@frankcompressors.com)  
Website : [www.frankcompressors.com](http://www.frankcompressors.com)

**Sales & Service :** • Chennai 95009 85866, 98946 08584

- Madurai 95009 00042 • Bangalore 96007 99946
- Cochin 98946 09111 • Hyderabad 95979 03999
- Mumbai 96296 19388 • Kolkata 94889 42683
- Delhi 96006 84777